

# CONVEYOR [ ConveyorAutomation ]

## [ AboutMattresTek ]

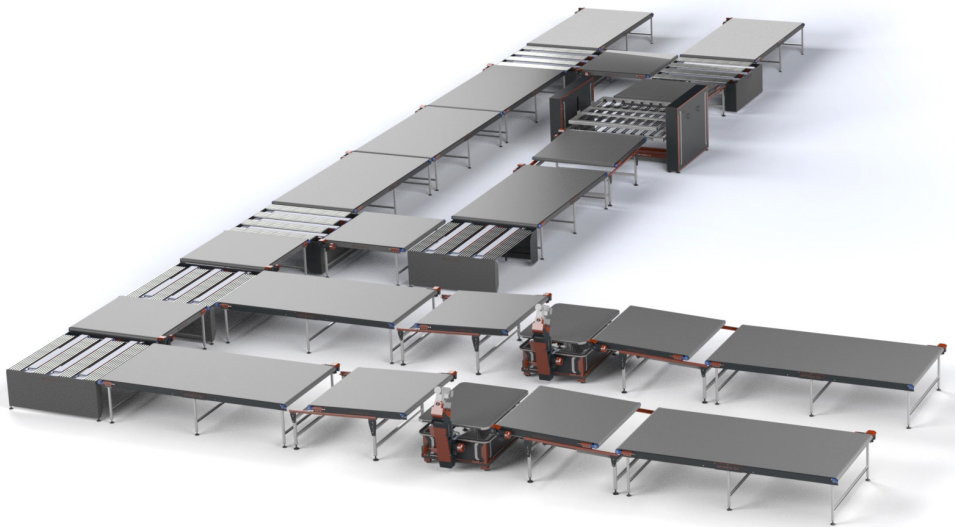
At MATTRESSTEK we have developed a complete range of machinery to fully automate your production process.

From inline belt driven conveyors to 90 degree turners.

We offer a comprehensive project management service supplying a full factory visualisation (as shown in the picture), tailored electrical controls and bespoke machines to achieve the best possible solutions for your business.

Our full conveyor range can be viewed on our website [www.mattresstek.co.uk](http://www.mattresstek.co.uk)

## MATTRESSTEK - Full Factory Automation Solution



## CI TEK - INDEX Conveyor - Belt driven indexing conveyor

We offer straight line belt driven indexing conveyors. This product is a 2mtr conveyor belt with the ability to feed a mattress onto any machine to remove the need for manual handling of the mattress. It bridges (index) a walkway of 500mm to allow a walk way between a line of conveyors or between the index conveyor and a machine to allow room around a machine for the operator.

- Standard length of 2 Mtr x 2 Mtr. A bespoke size can be manufactured by request
- Indexes a distance of 500mm. Other indexing distances can be manufactured if required



For more information on any of our products or services please email us at: [sales@mattresstek](mailto:sales@mattresstek) or visit us at: [www.mattresstek.co.uk](http://www.mattresstek.co.uk)

### SERVICES AVAILABLE

Technical Support Installation and Setup  
Bespoke Machine Designs  
Maintenance  
Parts  
Hardware Support  
Warranty work and lifetime support

**MATTRESSTEK**  
MACHINERY FOR THE MATTRESS INDUSTRY

Unit 12A, Metcalf Drive, Altham Industrial Estate  
Lancashire, United Kingdom BB5 5TU  
[www.mattresstek.co.uk](http://www.mattresstek.co.uk) [sales@mattresstek.co.uk](mailto:sales@mattresstek.co.uk)  
Tel: +44 (0)1282 479922

# CONVEYOR [ ConveyorAutomation ]

## [ MattresstekConveyors ]

All of our conveyors are:

- Designed to flawlessly merge with all of our other conveyors in our range
- Can be added onto any existing conveyor lines
- High quality specialised non-marking conveyor belt
- Efficient, reliable, high speed conveyor
- Can be used on taped and non taped products
- Low noise
- Comprehensive factory automation project management service available
- Full conveyor layout visualisation of your production line available to truly view and understand the conveyor line proposal
- Full electrical control circuit project management
- High quality motor drive
- Fully CE certified.

Our complete conveyor range can be viewed on our website [www.mattresstek.co.uk](http://www.mattresstek.co.uk)

For more information on any of our products or services please email us at: [sales@mattresstek](mailto:sales@mattresstek) or visit us at: [www.mattresstek.co.uk](http://www.mattresstek.co.uk)

### SERVICES AVAILABLE

Technical Support Installation and Setup  
Bespoke Machine Designs  
Maintenance  
Parts  
Hardware Support  
Warranty work and lifetime support

## CF TEK - FLIP CONVEYOR Mattress flip conveyor

We offer a mattress flipping unit. This machine will flip a mattress 180 degrees.

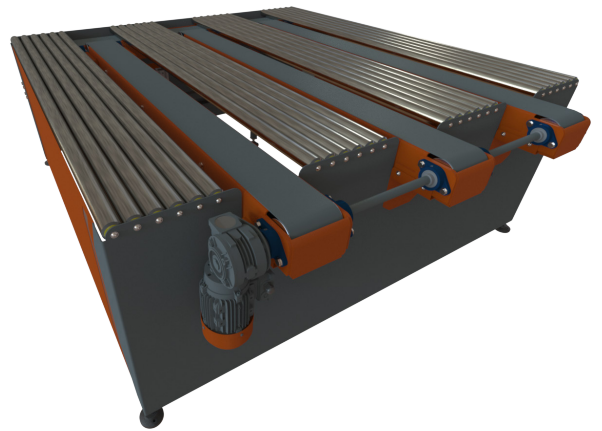


- Standard length of 2.5mtr is available. A bespoke size can be manufactured by request
- Removes the need for two operators to flip the mattress
- Designed to flawlessly merge with all other conveyors in our range.

## C90 TEK - 90 Degree mattress turning conveyor

Our C90 Tek can be used inline with our conveyor range with a pneumatic lifted belt driven conveyor to change product direction.

- Mattress handling size up to 2.1 Mtr x 2.1 Mtr (82.5" x 82.5")



## C TEK - BELT CONVEYOR - Straight line belt driven conveyor

We offer a series of straight line belt driven conveyors, 1 Mtr, 2 Mtr, 3 Mtr & 4 Mtr all 2 Mtr wide



**MATTRESSTEK**  
MACHINERY FOR THE MATTRESS INDUSTRY

Unit 12A, Metcalf Drive, Altham Industrial Estate  
Lancashire, United Kingdom BB5 5TU  
[www.mattresstek.co.uk](http://www.mattresstek.co.uk) [sales@mattresstek.co.uk](mailto:sales@mattresstek.co.uk)  
Tel: +44 (0)1282 479922